



management software

OMNITEC has developed different management systems to meet the needs of any hotel and simplify the management and control of access credentials for guests and internal and external personnel.

OMNITEC software acts as the backbone in the integrated access plan for hotels, tourist accommodation, residences and the hospitality sector.

OS ACCESS software

OS ACCESS is the most innovative development by OMNITEC that meets the most demanding technical requirements of hotels and can optimise the management of hotel access credentials and security for MiFare proximity, numeric code and Bluetooth devices.

Designed to work in the Cloud from a web browser, OS ACCESS also offers a desktop version for a local network.



The OS ACCESS software is complemented by the **UpKey app**, used by hotel staff for the installation and management of Bluetooth locks and devices, as well as for access to the different rooms via Smartphone.

Hotel guests receive their keys on their Smartphone and can access the room and the rest of the permitted areas using their own phone.

CLOUD server



Software installed on a secure Cloud server, which users access through a browser without the need to install additional software on their PCs. Accessibility, security and efficiency in managing access to your hotel.

Opening Alerts



Configures your push notifications for openings and attempted openings of certain locks or devices equipped with Bluetooth. Online security and access control with special restrictions.

Remote Management



Performing remote daily tasks such as managing guest and employee credentials, opening records, maintenance and emergency openings are possible through connectivity via Gateways.

Fast Check-In



Quick procedure for creating guest cards with just 2 pieces of data. MiFare cards, numeric codes and Bluetooth keys can be created quickly to streamline the guest check-in process.

Staff Credentials



Establishing employee profiles streamlines and minimises the management of the hotel's access plan. Permission changes are updated for all profile members. Specific access permissions are granted for users who do not fit into any profile.

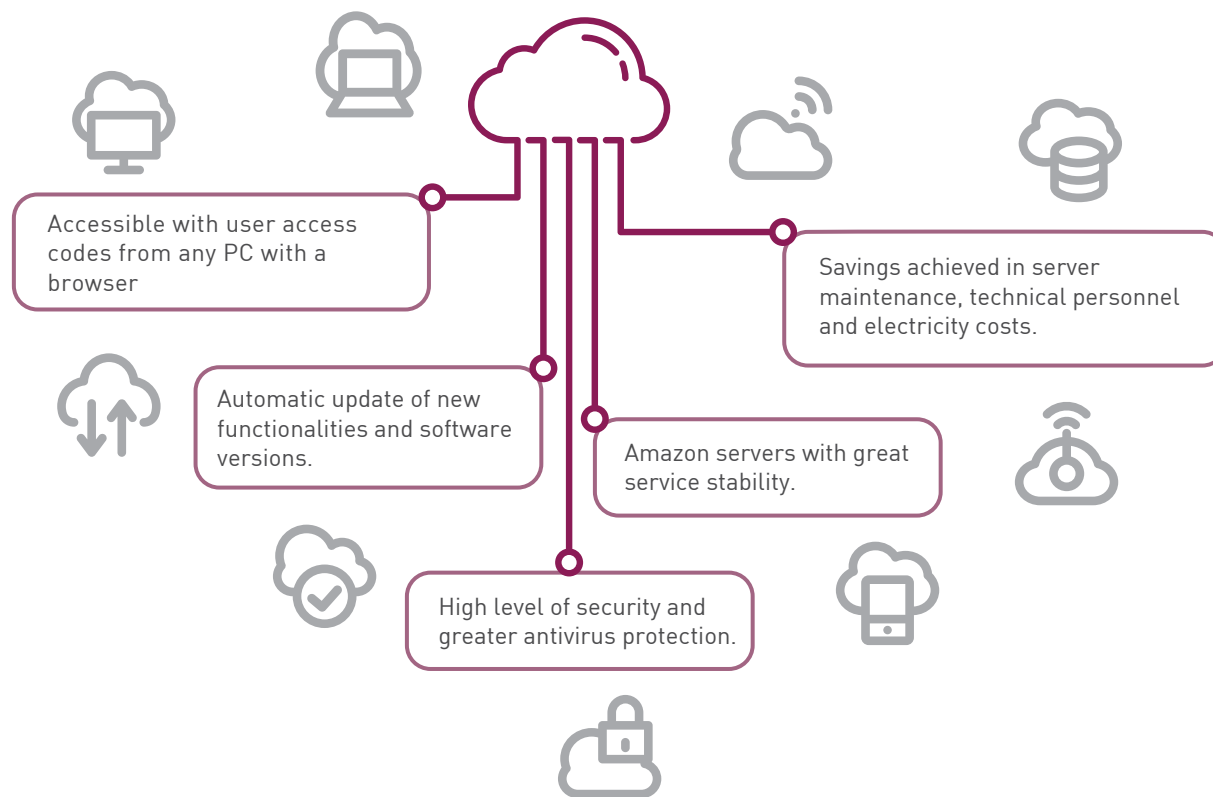
OMNI UX



Modern design with an intuitive interface, made especially with the user experience in mind. OS ACCESS OMNI UX usability allows the hotel to save time in its processes and personnel training.

OS ACCESS software

Cloud Server ADVANTAGES



features

- **Access by browser** optimises the availability, security and efficiency of the system
- **Encrypted data recording** on identification media
- Multi-user **license** valid for use under a Windows environment (Mac and Linux versions on development)
- Secure SQL **database** notably increasing security and providing secure access for remote technical assistance
- **Integration** with any PMS on the market (Opera, Prestige, etc.), and with room management systems
- Uniquely coded card encoding per installation or group of installations, limiting the use of cards that are not coded by the authorized devices
- Different levels of access for different system users
- **MOTEL Option**, limiting the use of the lock by hours
- **Scalable:** the platform gradually adjusts to the facilities, depending on the size of the access plan, the diversity of installed devices and user profiles. Users manage only those functionalities required in their facilities, allowing them to optimise their daily work



VANGUARD

Maximum operability and efficiency for hotels, guests and employees



online connectivity

The incorporation of the **OMNITEC** Gateway into the hotel infrastructure converts Bluetooth electronic locks into online devices.

Having an online connection via WiFi, the Bluetooth locks, safes, cylinders, access controls, etc. transfer all recorded events to the Cloud and can be managed remotely.

features

- Online Audit Trail
- Remote opening from Front-Desk or via administrator smartphone
- Battery level control
- Access credential management
- Date / Time update
- Opening alerts

UpKey app

The OMNITEC **UpKey** app works in addition to the **Os Access** software in hotel access management.

UpKey turns your Smartphone into an access key, programmer command for installation and maintenance, and a remote integrated management platform for the access plan.

The combination of **Os Access** software, **UpKey** app and Gateways gives the hotel a multitude of possibilities in managing the access plan, both in person and remotely, and provides an immediate response under any circumstances.

absolute control and management

For safer access management at the hotel, **UpKey** works under 3 user profiles:

Guest

You can access your room, garage, spa, etc. and open the safe with your Smartphone after receiving the corresponding eKeys.

Employee

You have access credentials for you to open and perform daily maintenance on all devices for which you have active credentials.

Once the commissioning of the facility is complete, control of locks, access control and safes are transferred to the administrator.

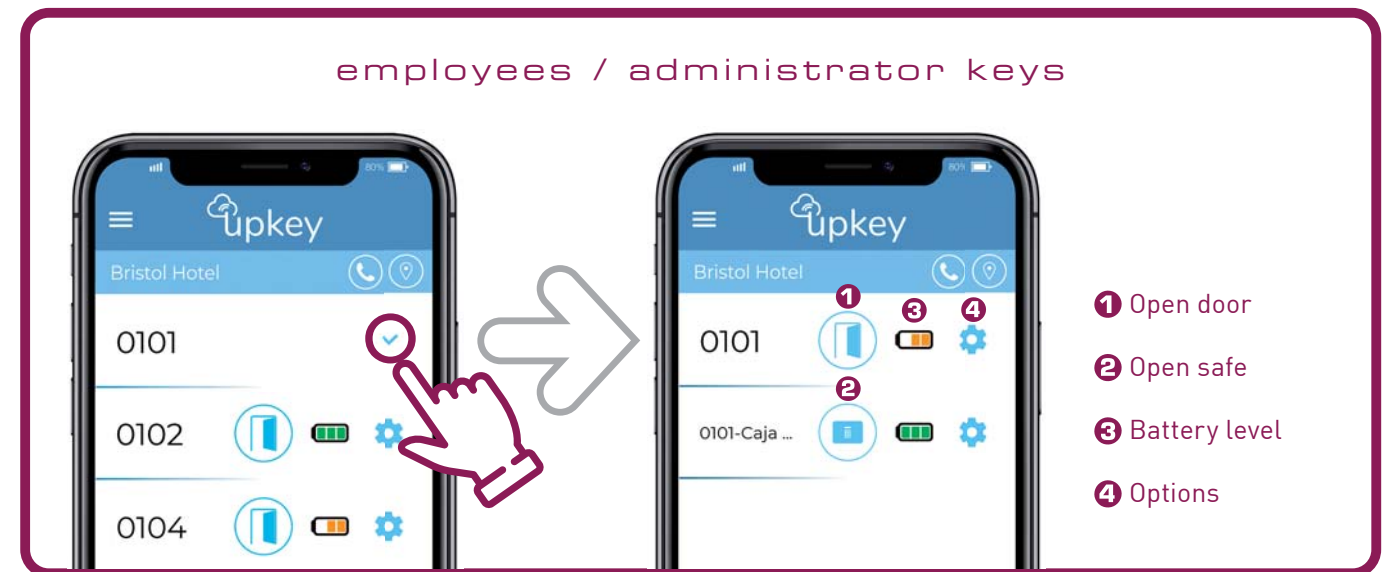
Administrator

For full control of the hotel's access plan; controls and manages all devices and access credentials for the entire facility, for both employees and guests.

CONNECTIVITY

Ongoing control of the access plan from anywhere

employees / administrator keys



Upkey guest

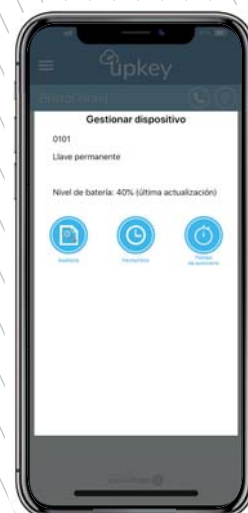


door



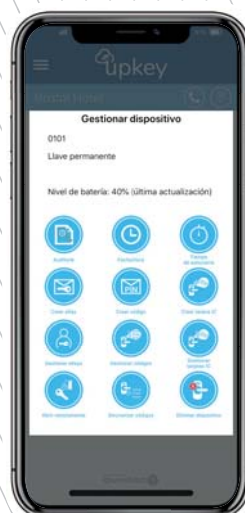
door and safe

Upkey employee



employee options

Upkey admin



administrator options

Administration functions

- | | | |
|--|---|--|
| <p>Opening record
Lists all openings and attempted openings</p> | <p>Date/Time
Updates the device date and time</p> | <p>Self-closing time
Sets the device self-closing time</p> |
| <p>Create eKey
Establishes and sends Bluetooth keys</p> | <p>Create Code
Establishes and sends numerical opening codes</p> | <p>Create Card
Sends the proximity card credentials to the device</p> |
| <p>Manage eKeys
Manages and cancels active eKeys</p> | <p>Manage Codes
Manages and cancels numerical codes</p> | <p>Manage Cards
Manages and cancels active proximity cards</p> |
| <p>Open Remotely
Remote opening through Gateway. Requires double validation</p> | <p>Synchronise codes
Updates active code credentials on a device</p> | <p>Delete device
Unlinks the user's device and puts it into installation mode</p> |

SMARTPASS software

At OMNITEC, we have developed **SMARTPASS** software to manage electronic proximity locks, access control and energy savers. Management with the **SMARTPASS** software is complemented by the wireless programming controller and MiFare programming cards. **SMARTPASS** was designed to meet the needs and demands of any type of hotel establishment, **guaranteeing internal security and control.**



IDENTIFICATION TECHNOLOGY

MIFARE PROXIMITY (13.56 Mhz)

OMNITEC locks use the **MIFARE** (13.56 Mhz) identification system, the most widely-used, and at the same time, the most secure technology, allowing very simple and quick integration with other market applications.

The medium on which the access credential is held can have multiple formats, and always adapted to the needs of the hotel: cards, key holders, bracelets, all-inclusive bracelets, etc. These can all be carried openly and don't confine the user, which finally translates into significant cost savings.



SECURITY | CONTROL | PEACE OF MIND

SMARTPASS SOFTWARE

Of the different systems that **SMARTPASS** encompasses, the most common one and with highest level of implementation at the international level is the management software, which offers:

- **Encrypted recording** of data on identification supports
- Multi-user **license** valid for use under a Windows environment
- Secure SQL **database**, notably increasing security and providing secure access for remote technical assistance. Optional installation on **OMNITEC Server**
- **Compatible** with any PMS on the market (Opera, Prestige, etc.)
- Uniquely coded card encoding per installation or group of installations, limiting the use of cards that are not coded by the authorized devices
- Different levels of access for different system users
- Management and control of guests and employees access
- **BackUp System** in order to issue new credentials for new guests in case of computer problems
- **HOSTEL Option**, for shared use of rooms by different guests, with independent check-in and check-out dates
- **MOTEL Option**, limiting the use of the lock by hours
- Direct access to the online assistance website
- **REVALIDATOR:** our system is capable of managing credentials by the hour or day/s. After the indicated period, it is necessary to revalidate their user permissions with the **OMNITEC Revalidator** in order for the card to continue to be operational. The device can be installed in a door or controlled passage by which, at the same time it revalidates the user permissions, it grants access to the user, speeding up and securing the process and the security of the hotel to the utmost





Rent & Pass app

The OMNITEC **Rent & Pass** app has been developed for access management in all establishments that do not require server software such as **Os Access** or **SmartPass**, owing to their size.

Small hotels, hotels without a 24-hour Reception, rural tourism accommodation, boutique hotels, etc. You will find the management and maintenance tool in **Rent&Pass** that best suits your business; offering remote management from a Smartphone or tablet.

features

ELECTRONIC KEY

Sending electronic keys via an app anywhere and anytime



NUMERICAL ACCESS CODE

Opening via numerical code without installing an app



REAL-TIME MANAGEMENT

Remote cancellation, blocking and deleting keys sent at any time



AUDITABLE ACCESS

Access logging for each lock and user



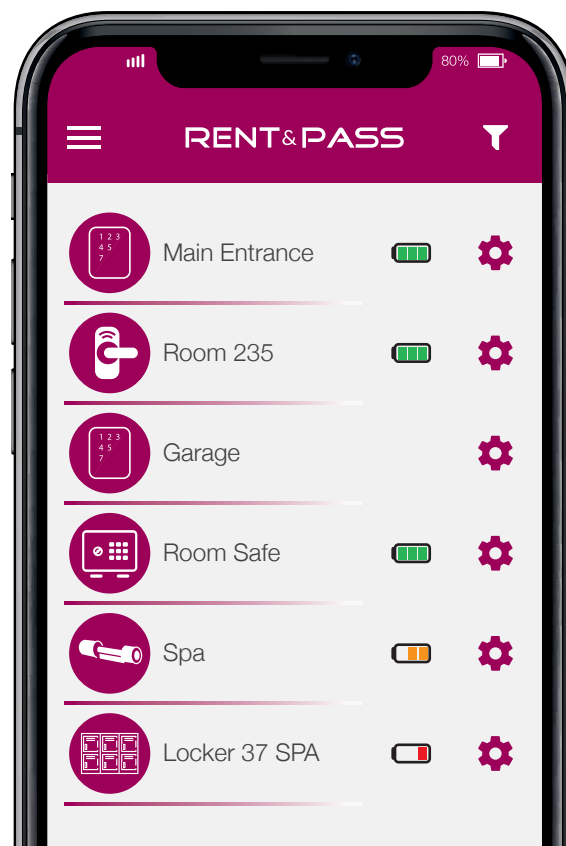
ACCESS CODE MANAGEMENT

Code with custom properties, it can be deleted at any time

3XAX2
5BA5B
2A2A2
85BG9

ALERT FUNCTION

Notification of alerts in real time, security and protection



The **Gateway** converts the devices managed with **Rent&Pass** into online devices.

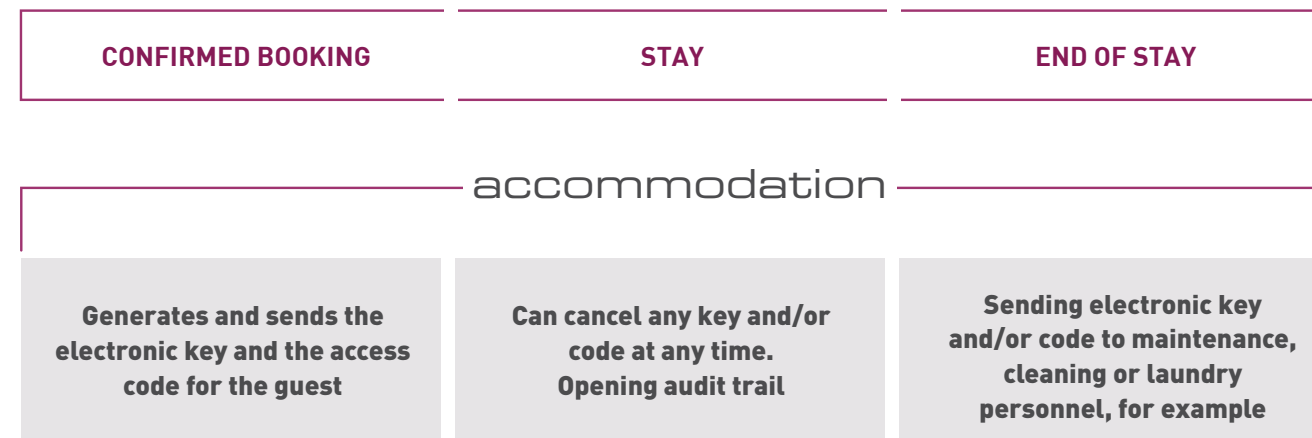
With an online connection via Wi-Fi, the devices transfer the recorded events to the Cloud, which allows to the administrator the online **audit from their own Smartphone**.

Another functionality of the **Gateway** that brings extra convenience to the owner is its **remote opening**. If a person is faced with a **Rent&Pass** controlled door without an access credential, the owner can open the different devices from their own Smartphone.



OPERATION

Convenience and simplicity when managing access to your hotel



security and control

Rent&Pass lets the owner and hotel staff send the guest electronic keys and numerical codes to access the hotel, the room, the garage and any other room equipped with an **OMNITEC** Bluetooth access control. With **Rent&Pass** you can cancel and delete Bluetooth keys and numeric codes at any time from the app with administration permissions.

Rent&Pass incorporates notifications to the hotel when the guest opens any device.



simple procedures, satisfied guests

With **Rent&Pass**, your arrival time and unexpected delays no longer matter. Before starting their trip, guests receive the following on their Smartphone: electronic key and/or access codes for locks, access control for the main hotel entrance, as well as their room, garage and any other area equipped with an access control system.

		MANAGEMENT			OPENING		
		OS ACCESS Upkey	Server SMARTPASS	RENT PASS	CARD	Bluetooth	CODE
	EVO	•		•	•	•	
	GAUDI	•	•		•	OP	
	CODE	•	•	•	OP	•	•
	FIT-IN	•	•		•	OP	
	X-CLUSIVE		•		•		
	X-RP	•		•	•	•	
	COMPACT	•	•		•		
	ANTI-VANDALISM	•	•		•		
	INUP	•	•		•		
	DIGIT	•		•	•	•	•
	OPAK	•	•	•		•	
	LIFT	•	•		•		

Security and efficiency in access management
International Experience



- H** **REFERENCES**
- Design Hotel 11 Mirrors 5* Ukraine
 - Catalonia Royal Tulum 5* Mexico
 - Mercure Porte Versailles 4* France
 - Sofitel Luxembourg Europe 5* Luxembourg
 - Hotel Eden Ardenne 3* Belgium
 - Barceló Torre de Madrid 4* Spain
 - Sol Phu Quoc 4* Vietnam
 - Zheneva Truskavets 5* Ukraine
 - The Bocardo Hotel 5* United Kingdom
 - Mainport Hotel 5* Nederland
 - One Resort Monastir 4* Tunisia
 - Finest Isla Mujeres 5* Mexico
 - Hotel Wissal 4* Mauritania
 - Hotel Colbert 4* Madagascar

look for more references in our website